

检测科技

Mentor EM

——全新理念涡流探伤仪

GE检测科技

徐贝尔

检测科技

突破传统 全新理念

应用程序化 绿色无纸化
无线连接 远程监控



Mentor EM 硬件配置

1. 超大屏幕彩色显示--10.4"

- ✓ 1024 x 768 全屏XGA 分辨率
- ✓ 高亮显示，极佳的户外可视能力

2. 触摸屏操作

即便佩戴手套也可轻易操作

3. 报警，警示以及改变状态时，液晶提示

4. 电池永久内置，4小时持续续航

5. 防摔保护设计，IP65防护等级

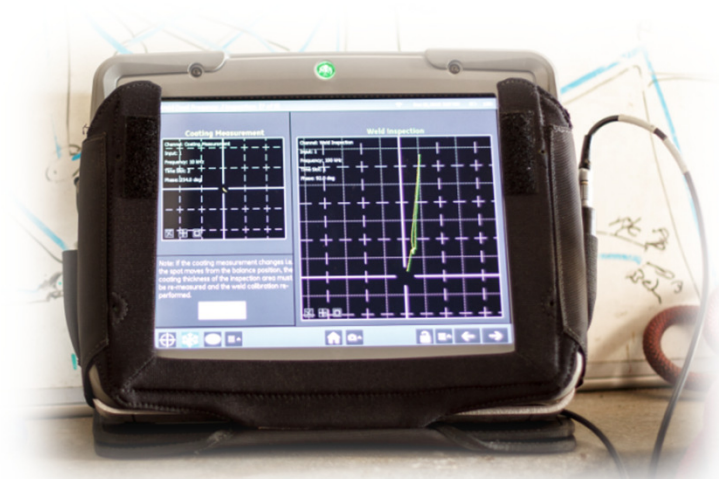
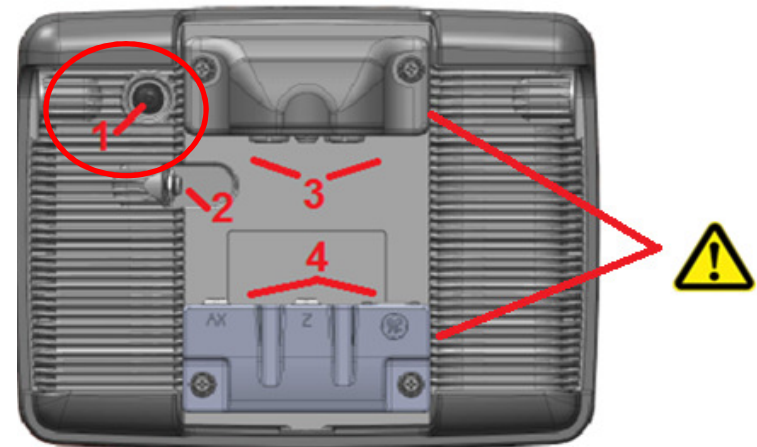
6. 作业温度：-20 - 55C， 重量： 2.7Kg



imagination at work

Mentor EM 硬件配置

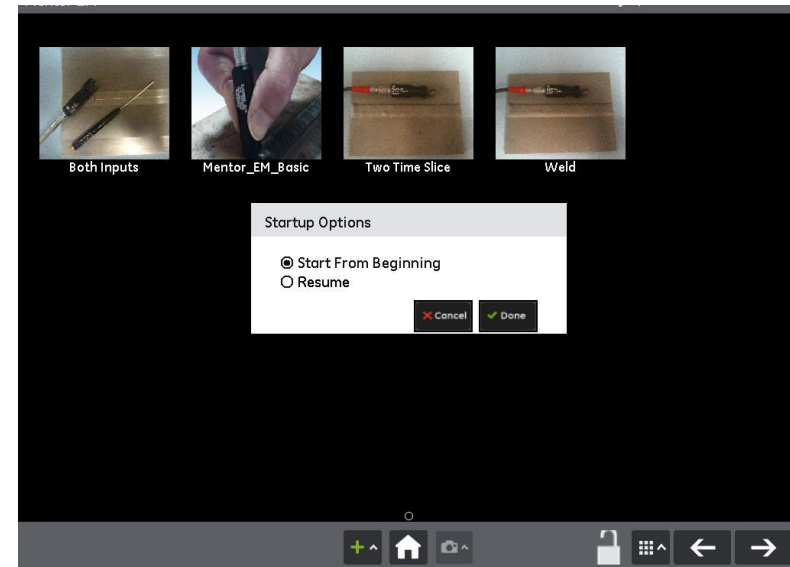
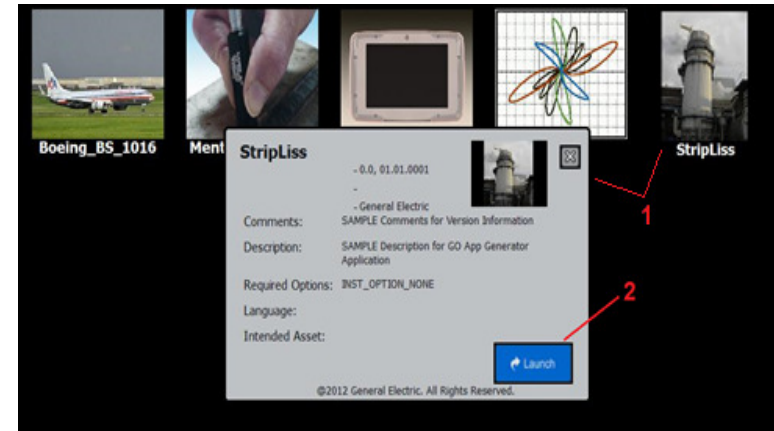
1. 电源开关 - 请按**1-2秒**即可正常开关机
2. 充电 - 请使用**GE**提供的充电器，**12伏**输入
3. 探头连接模块 - 单/双探头接口，可反向安装，可以连接其它品牌探头
4. 数据连接模块 - **USB**，网线，数据传输接口，编码器，也可订制其它类型接口
5. 无线传输 - 蓝牙、**WiFi**连接，**PC/iPhone/iPad**远程实时监控
6. 遥控平衡
7. 超大内存 - **8G** 保存应用程序，标准文件，图像，视频等



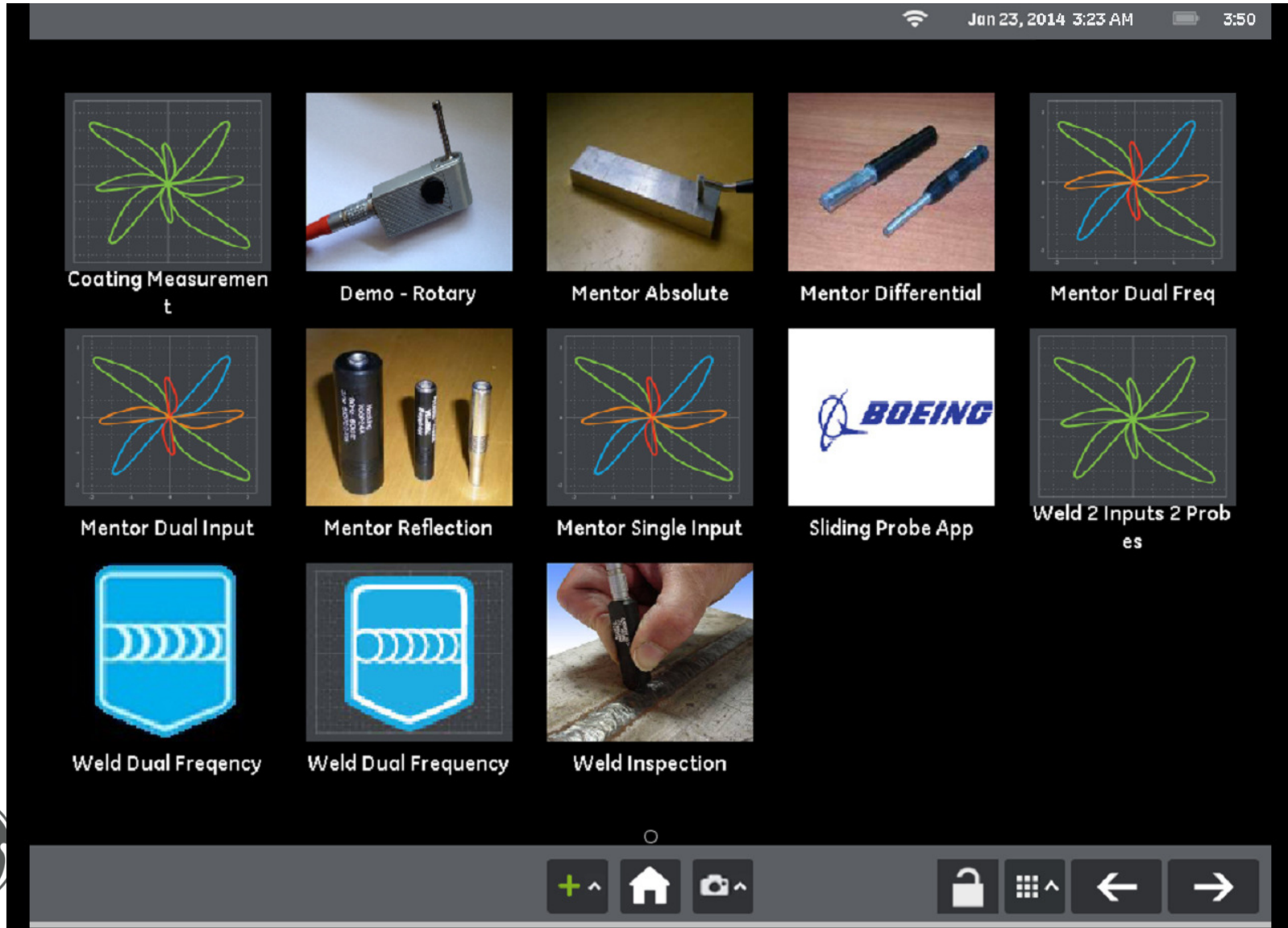
imagination at work

运行应用程序

- 通过“Creator”软件在电脑上编辑应用程序，通过U盘导入Mentor，可实现数据锁定功能
- 可多页显示多个应用程序
- 单击应用程序图标，即可读取更多信息
- 长按启动程序

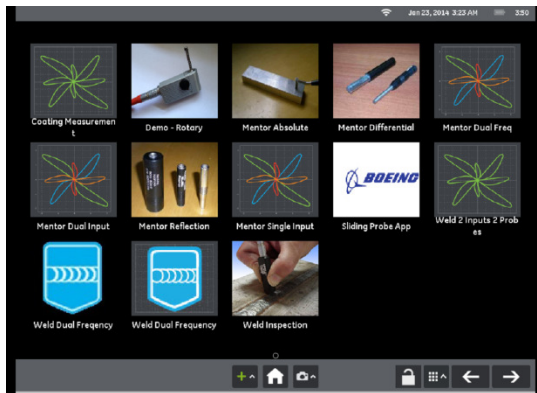


导入应用程序

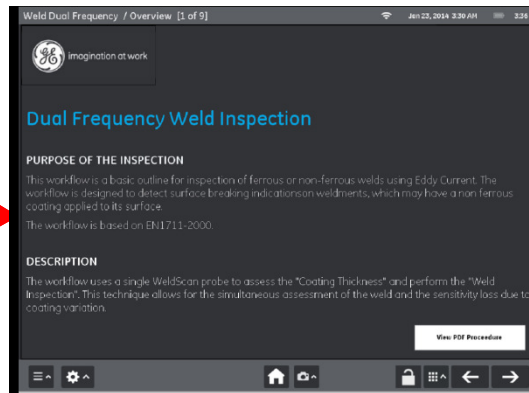


Mentor 操作流程

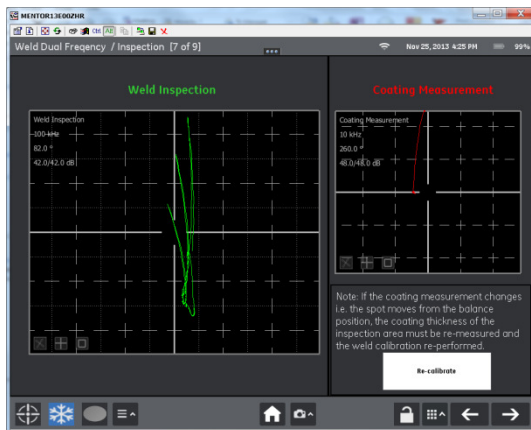
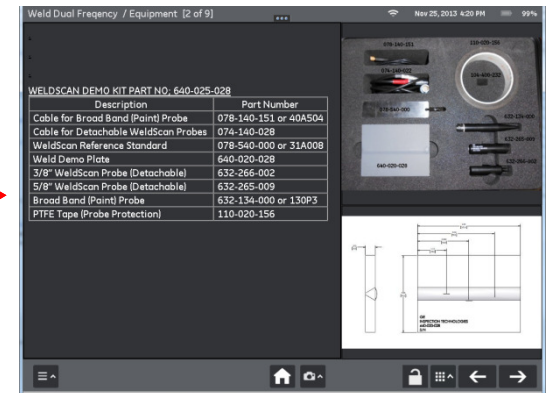
启动应用程序



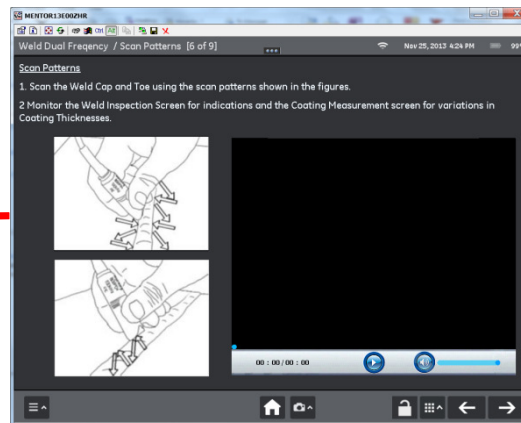
程序描述



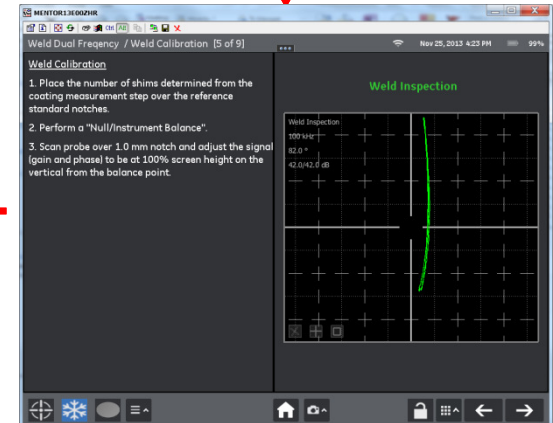
使用设备



实际检测

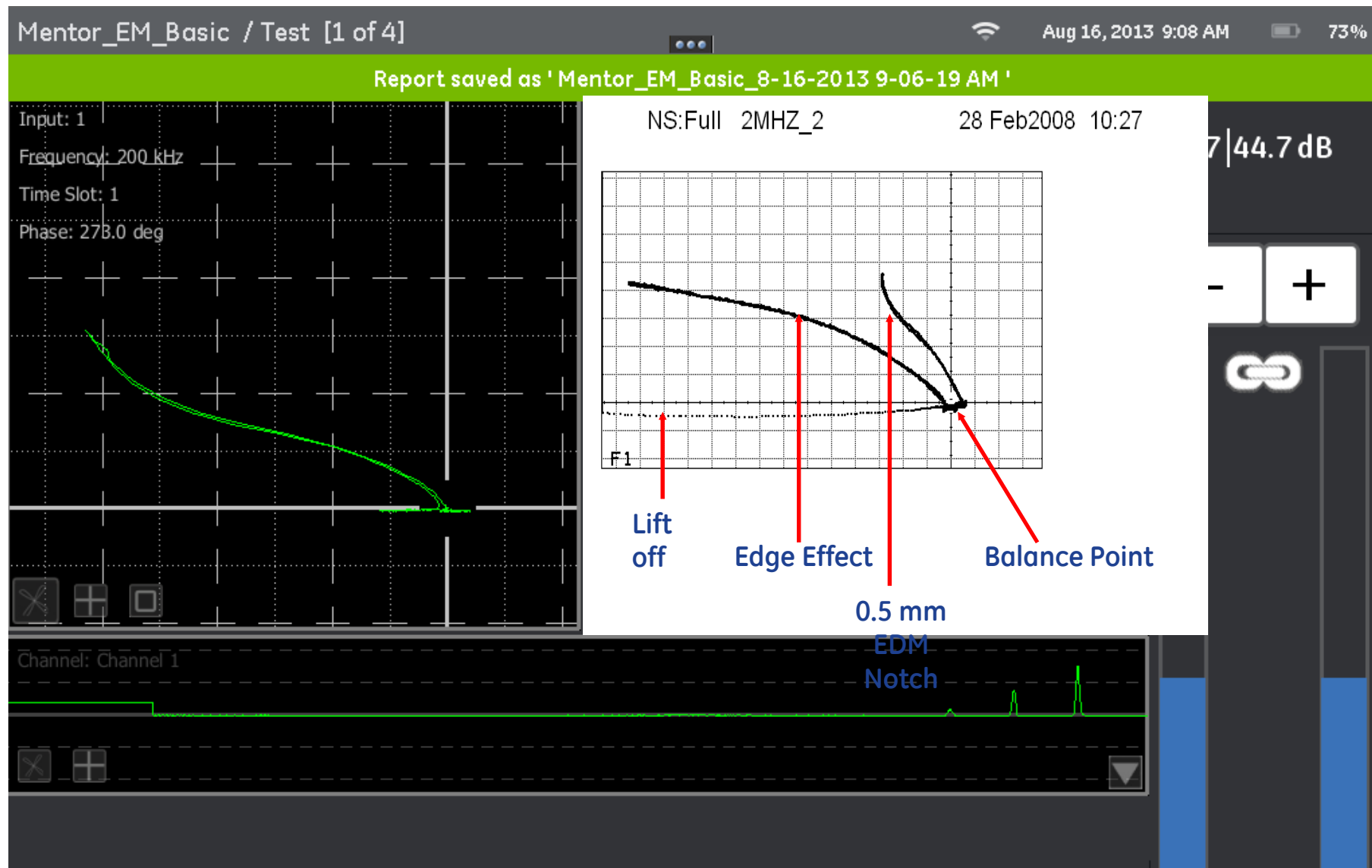


演示视频



校准

检测界面，经典的Phasec性能



检测示例

Demo - Rotary / Calibration [4 of 6] Jan 23, 2014 4:40 AM 2:05

Calibration

Step 1
Insert probe into the Mini Drive Unit and connect the Mini Drive Unit to Mentor using the cable.

Step 2
Switch on the Mini Drive Unit and slowly insert the spinning probe into Block (layer) No: 1. Stop inserting the probe when a signal response is obtained from the Corner EDM Notch.

Step 3
Rotate the Phase to the verticle

Step 4

Timebase (t/y)

Spot (x/y)

Inspection

500 kHz
131.5 °
37.8/37.8 dB

⊗ ⊕ ⊞

Inspection

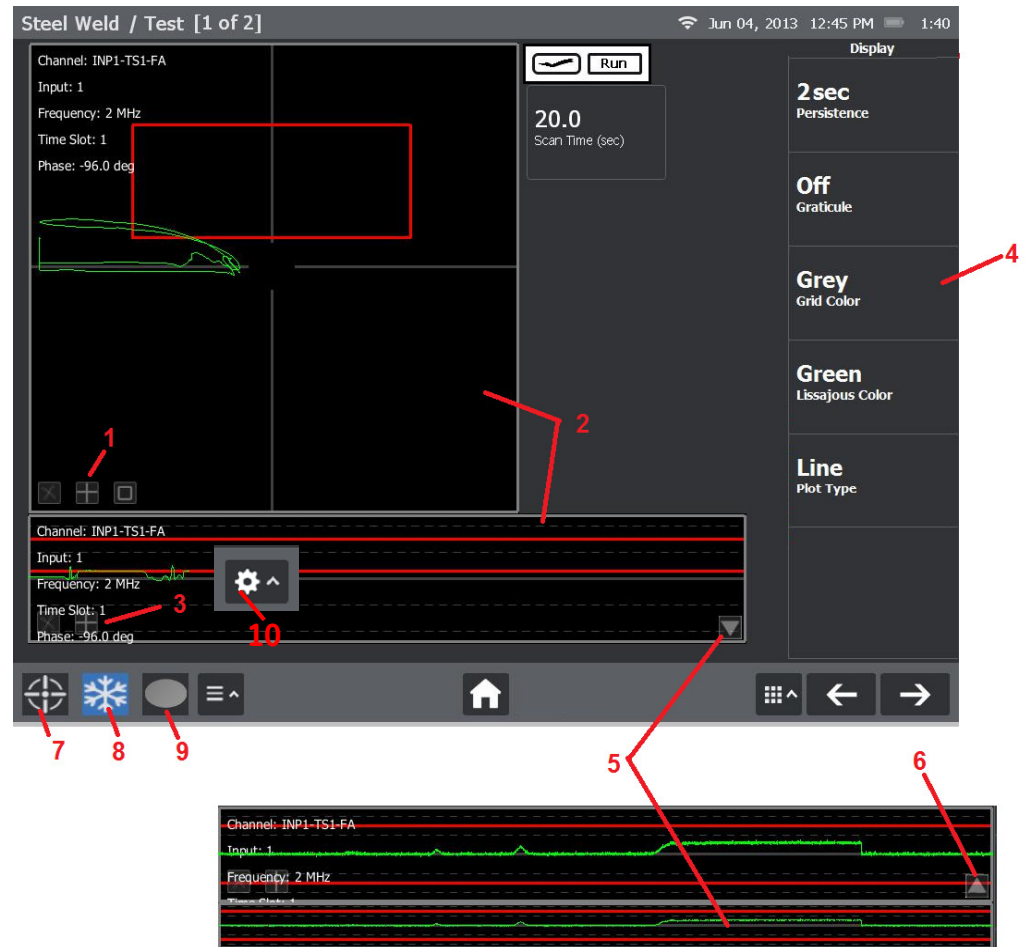
⊗ ⊕ ⊞

⊗ ⊕ ⊞⊗ ⊕ ⊞⊗ ⊕ ⊞⊗ ⊕ ⊞⊗ ⊕ ⊞⊗ ⊕ ⊞⊗ ⊕ ⊞⊗ ⊕ ⊞⊗ ⊕ ⊞⊗ ⊕ ⊞



检测界面

1. 菜单选择按键
2. 信号显示窗口 - 阻抗图/时基图
3. 时基图菜单
4. 主菜单
5. 扩展时基图，观察每个信号
6. 关闭时基图
7. 平衡键：单击/双击原点/遥控
8. 冻结
9. 清屏
10. 保护和导入设置



报告与文件管理

Mentor Single Input / Spot [1 of 2] Jan 23, 2014 4:01 AM 2:49

0 of 6 Items selected 0 of 1 Items selected

Reports Sort

Reports

| | | | | |
|---|--|----------------------|-----------------------|------|
| ○ | | Airbus Rotary Pro... | Jul 15, 2013 10:1 AM | 627K |
| ○ | | Mentor Single Inp... | Jan 23, 2014 3:54 AM | 68K |
| ○ | | 53-30__P6_1031471... | Aug 29, 2013 6:17 AM | 755K |
| ○ | | Dual Frequency We... | Nov 21, 2013 3:14 PM | 268K |
| ○ | | Weld Dual Freqenc... | Dec 11, 2013 10:27 AM | 34K |
| ○ | | Dual Frequency We... | Nov 21, 2013 3:14 PM | 268K |

Reports

○ Mentor Single Inp... Jan 23, 2014 3:54 AM 68K

- **Camera button triggers reports**
- **Reports are auto named with app, date and time**
- **Saved with app that created them**
- **File manager manages internal hard drive**
- **Copy to USB stick or network**

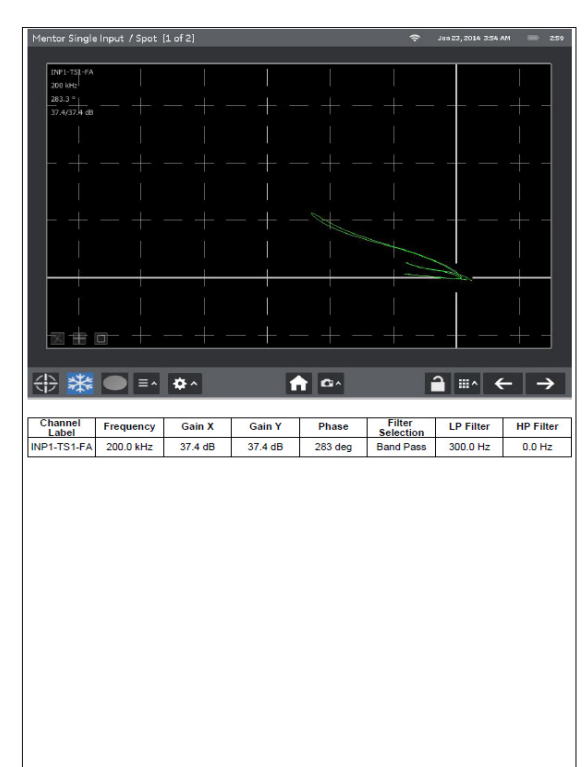
← | |

Select Location ^ Rename

报告示例

| Mentor Report | | | | |
|----------------------------|---------------------|--------------|---------------|--|
| Mentor Single Input / Spot | | | | |
| Instrument Settings | | | | |
| Input 1 | | | | |
| Time Slot 1 | Frequency Selection | FA | | |
| | Channel Label | INP1-TS1-FA | | |
| | Frequency | 200.0 kHz | | |
| | Drive Percentage | 100 % | | |
| Bridge Mode | | Receive Gain | Drive Voltage | |
| BRIDGE 50 | | 22 dB | 8 | |
| Time Slot 2 | Frequency Selection | | | |
| | Channel Label | | | |
| | Frequency | | | |
| | Drive Percentage | | | |
| Bridge Mode | | Receive Gain | Drive Voltage | |
| BRIDGE 50 | | 22 dB | 8 | |

| Instrument Settings | | | | |
|----------------------|----------------------------|--------------|--------------------|---------|
| Input 2 | | | | |
| Time Slot 1 | Frequency Selection | | | |
| | Channel Label | | | |
| | Frequency | | | |
| | Drive Percentage | | | |
| Bridge Mode | | Receive Gain | Drive Voltage | |
| BRIDGE 50 | | 22 dB | 8 | |
| Time Slot 2 | Frequency Selection | | | |
| | Channel Label | | | |
| | Frequency | | | |
| | Drive Percentage | | | |
| Bridge Mode | | Receive Gain | Drive Voltage | |
| BRIDGE 50 | | 22 dB | 8 | |
| Panel Settings | | | | |
| Alarm 1 Delay | 0.00 sec | Alarm 1 Hold | 0.5 sec | |
| Alarm 2 Delay | 1.00 sec | Alarm 2 Hold | 0.5 sec | |
| Comparison View File | \\Data\comparison\data.pkt | | Comparison Enabled | false |
| Save Comparison Data | false | | Drive RPM | 1000 |
| Actual Frame Rate | 2000 Hz | | Persistence | 1.0 sec |
| Process | Off | | Rotary Mode | Off |
| Rotary Probe RPM | 0 | | Rotary Sweeps | 5 |
| Scan Time (sec) | 10.0 sec | | | |



imagination at work

表面检测配件包

上层

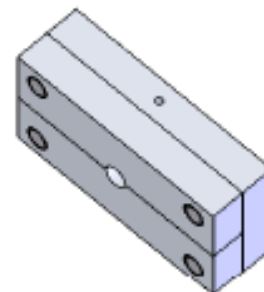
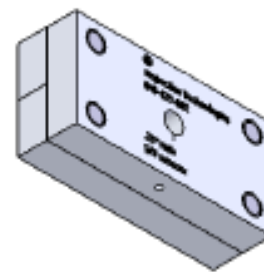
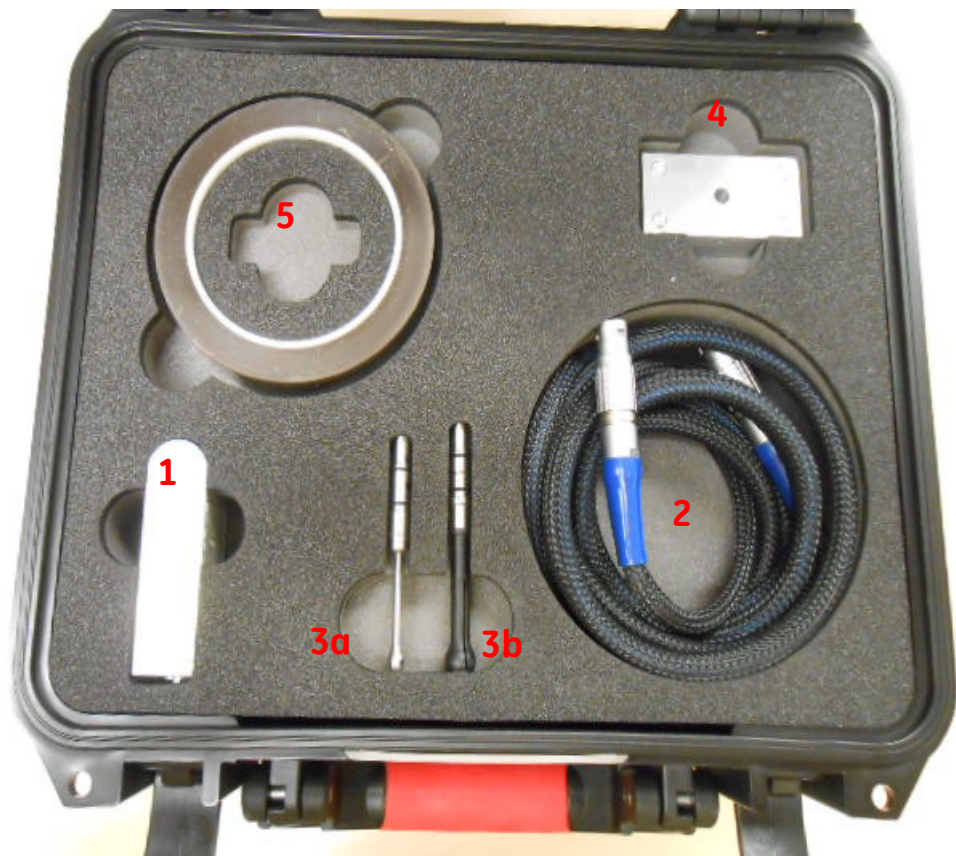


下层

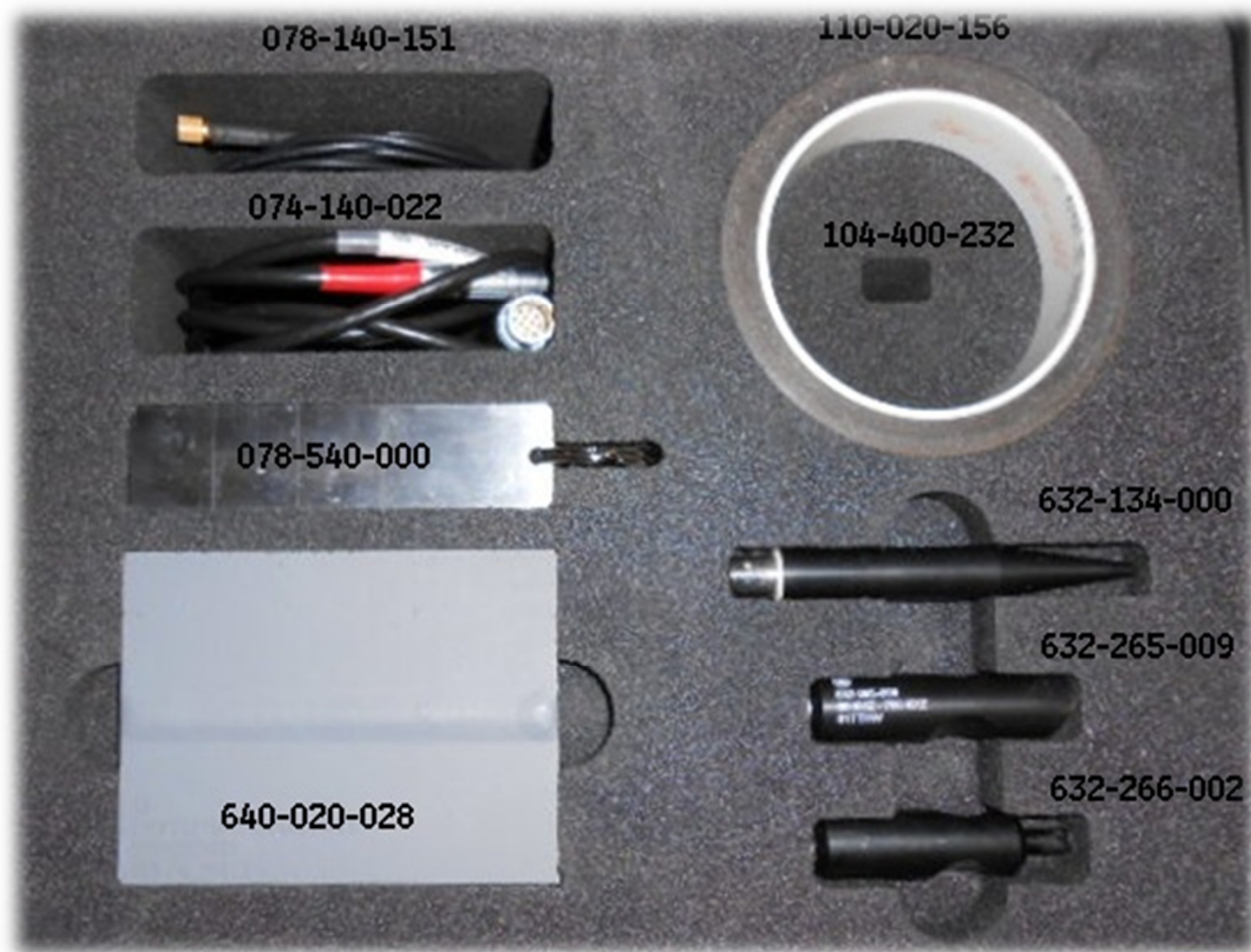


imagination at work

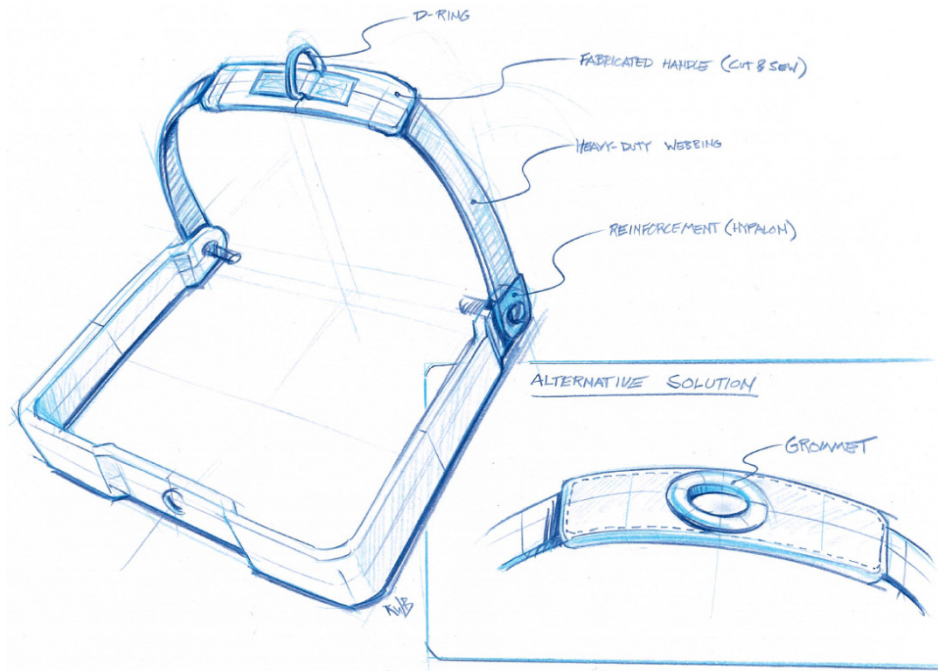
旋转检测配件包



焊缝检测配件包

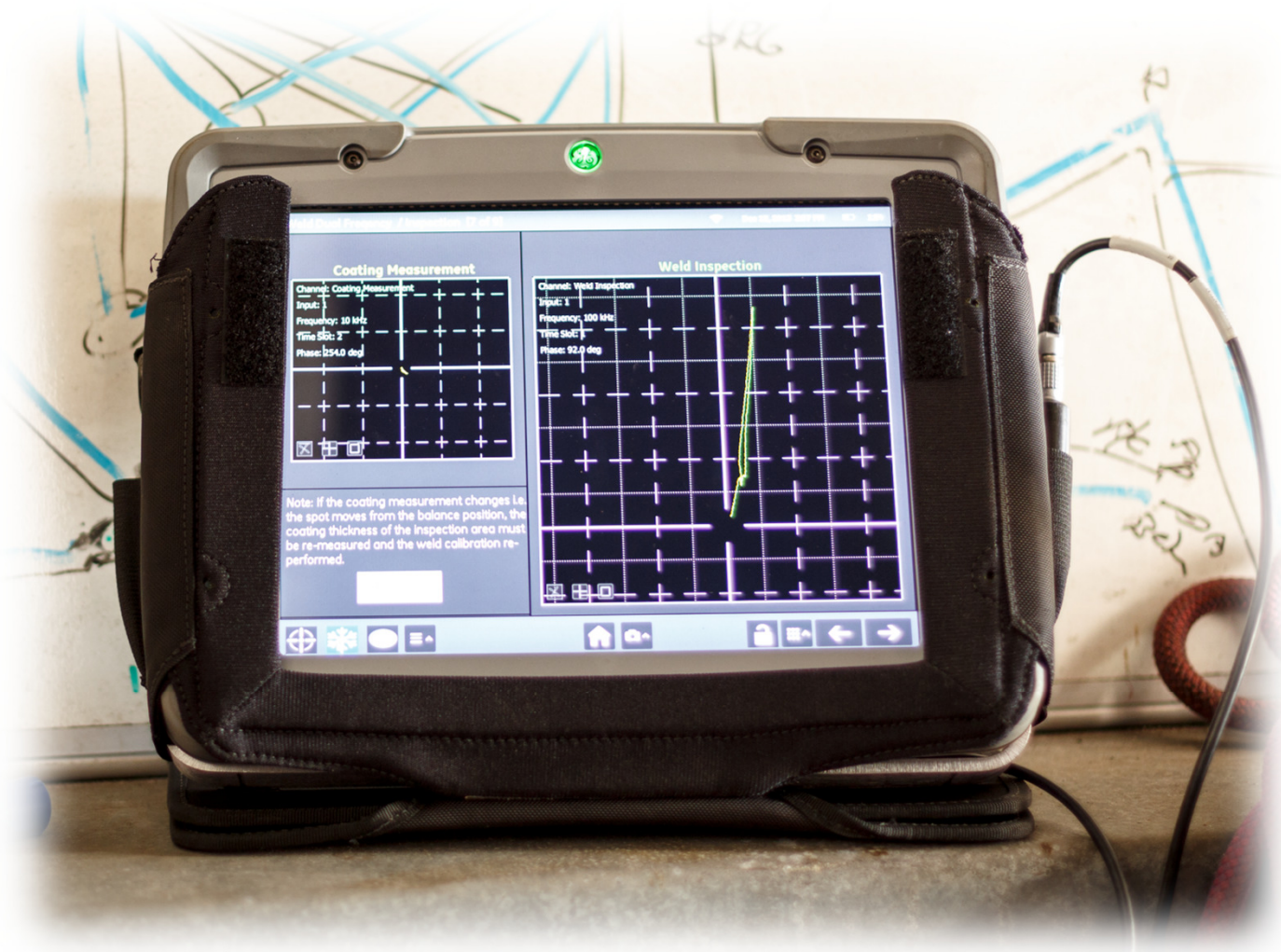


绳索配件包



imagination at work

问题?



imagination at work



imagination at work



imagination at work